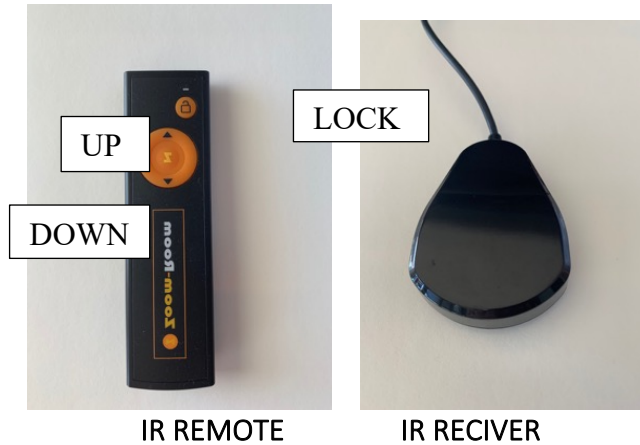


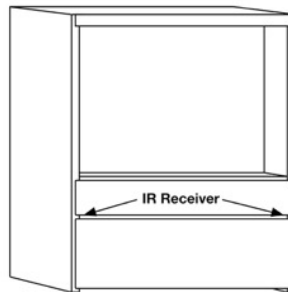


Zoom-Bed Remote Control User Guide
Call (888) 211-1120 if you need help!



1. Make sure there are 2 AAA batteries installed in the Remote light is working, and that the Control Unit is plugged into a working outlet. And the light indicator on the

2. Make sure the IR Receiver has a clear line of sight to the remote control. The IR Receiver must be placed in an unobscured location for direct line of sight. Most often it is placed behind the Footboard and Headboard at the gap between them.



3. Use the "Up" arrow (the arrow pointing away from you) and the "Down" arrow (the arrow facing towards you) to operate the bed by pointing the remote towards the IR receiver and pressing and holding the button. The button has to stay pressed to operate the bed. Once you lift the finger off the button, the bed will stop.

3. The Child-Safety-Lock prevents the mechanism from operating. To lock or unlock the bed remote, press the round button "0" on top of the remote and hold for 10 seconds. You will notice the LED light on the Remote will blink a few times, and then you will hear a faint double beep. Let go of the "0" button and the bed will be locked.

4. To deactivate this feature, simply follow the steps above again: press the "0" and hold for approximately 10 seconds. The bed will then operate normally